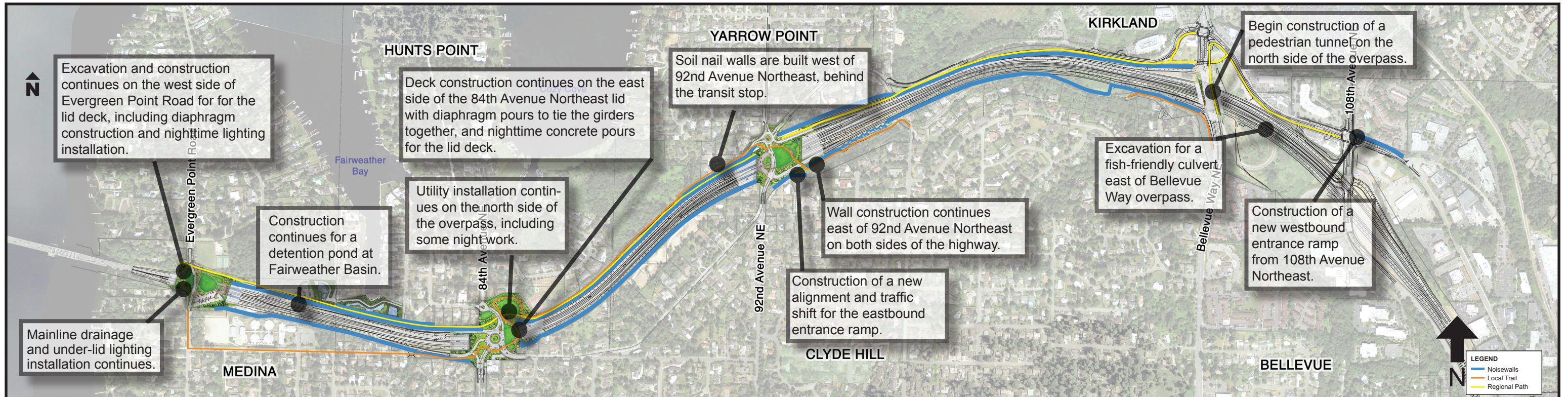


## Eastside SR 520 construction activities - June 2012



Crews are preparing to shift traffic on 84th Avenue Northeast at the end of the month. The traffic shift is tentatively scheduled for June 29.

The next full SR 520 closure is scheduled for July 13-16 when the 84th Avenue Northeast crossing will be demolished and another fish-friendly culvert will be installed underneath SR 520 east of Bellevue Way.

For the most up-to-date project information, please visit:

[www.wsdot.wa.gov/Projects/SR520Bridge/MedinaTo202/MedinatoSR202Construction](http://www.wsdot.wa.gov/Projects/SR520Bridge/MedinaTo202/MedinatoSR202Construction)